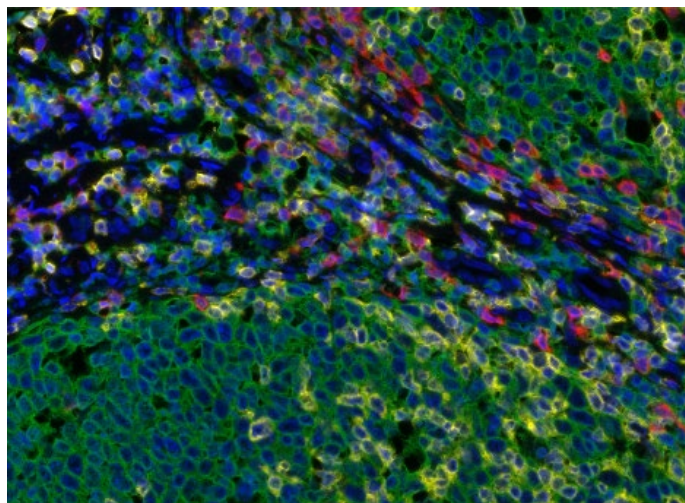


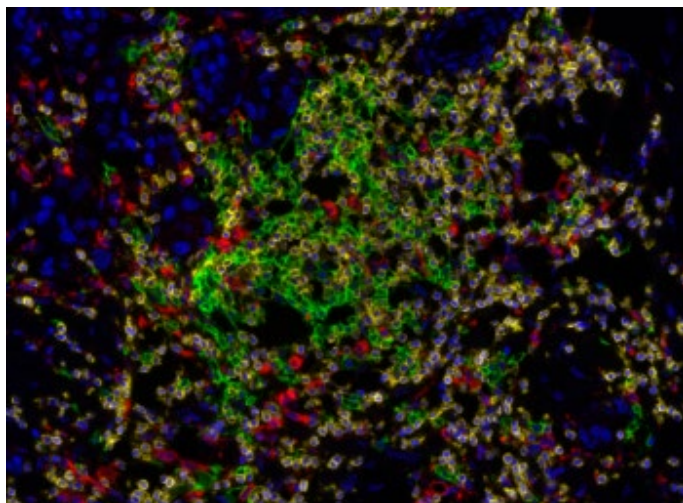
IHC Multiplex Antibody Panels

Believe in What You See.

Detection of human CD3 (teal), CD8 (green), CD68 (orange), CK (red), Ki67 (yellow) and PD-L1 (white) in FFPE HNSCC by IHC-IF. Rabbit anti-CD3e recombinant monoclonal [BL-298-5D12] (A700-016), rabbit anti-CD8a recombinant monoclonal [BLR044F] (A700-044), mouse anti-CD68 monoclonal [KP-1] (A500-018A), mouse anti-cytokeratin monoclonal [AE1/AE3] (A500-019A), rabbit anti-Ki67 monoclonal [BLR021E] (A700-021) and rabbit anti-PD-L1 recombinant monoclonal [BLR020E] (A700-020). Secondary: HRP-conjugated goat anti-rabbit IgG (A120-501P) and HRP-conjugated goat anti-mouse IgG (A90-116P). Substrate: Opal™ 480, 520, 570, 620, 690 and 780. Counterstain: DAPI (blue).



Detection of human CD3 (yellow), CD8 (red), and CD20 (green) in FFPE tonsil by IHC-IF. Rabbit anti-CD3e recombinant monoclonal [BL-298-5D12] (A700-016), rabbit anti-CD8a recombinant monoclonal [BLR044F] (A700-044), mouse anti-CD20 monoclonal [L26] (A500-017A). Secondary: HRP-conjugated goat anti-rabbit IgG (A120-501P) and HRP-conjugated goat anti-mouse IgG (A90-116P). Substrate: Opal™ 520, 620, and 690. Counterstain: DAPI (blue).



Detection of human CD3 (yellow), CD20 (green), and CD68 (red) in FFPE lung carcinoma by IHC-IF. Rabbit anti-CD3e recombinant monoclonal [BL-298-5D12] (A700-016), mouse anti-CD20 monoclonal [L26] (A500-017A), and mouse anti-CD68 monoclonal [KP-1] (A500-018A). Secondary: HRP-conjugated goat anti-rabbit IgG (A120-501P) and HRP-conjugated goat anti-mouse IgG (A90-116P). Substrate: Opal™ 520, 620, and 690. Counterstain: DAPI (blue).

Cancer Research
Really Good Antibodies
bethyl.com

 **cambridge**
bioscience

**BETHYL**
LABORATORIES, INC

Believe in What You See. IHC Multiplex Antibody Panels

Bethyl introduces IHC multiplex panels to profile the tumor microenvironment. Each of these antibodies has been validated for use in IHC and utilized in a multiplex format. All antibodies are manufactured on-site and are validated by our scientists using proprietary processes ensuring the highest quality. With over 45 years of experience, Bethyl is recognized as a leading antibody manufacturer trusted by researchers around the world.

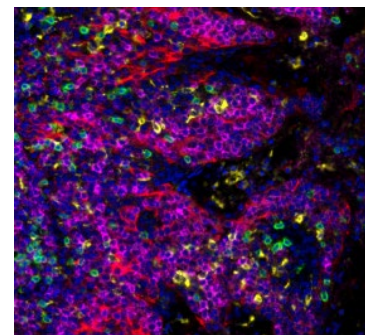
Pick any of the three core panels and add one or more antibody of your liking from our immuno-oncology inventory below. To order your IHC panel or for custom inquiries, visit bethyl.com/multiplex or call our Customer Service team at 1.800.338.9579.

IHC PathPlex™ Core Panels

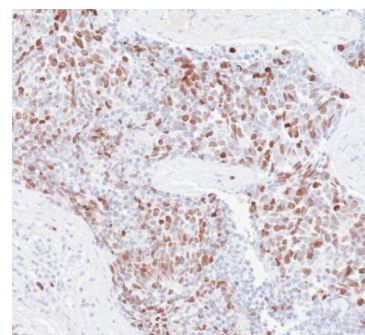
T Cell I/O Panel	CD3, CD8, PD-L1
Lymphocyte Panel	CD3, CD8, CD20
T,B &M Panel	CD3, CD20, CD68

Immuno-Oncology Targets	Catalog #	Clone #	Applications
CD3E	A700-016	BL-298-5D12	WB, IP, IHC, ICC, IHC-IF
CD8	A700-044	BLR044F	IHC-P, F, IHC-IF
CD20	A500-017A	L26	WB, IHC, ICC, IHC-IF
CD68	A500-018A	KP-1	IHC, IHC-IF, F
PD-L1	A700-020	BLR020E	WB, IP, IHC, ICC, IHC-IF, ICC-IF
CD45	A700-012	BL-178-12C7	WB, IP, IHC, ICC, IHC-IF, ICC-IF
CD4	A700-015	BL-155-1C11	WB, IP, IHC, IHC-IF
Granzyme B	A700-022	BLR022E	IHC, WB, IHC-IF
LAG3	A700-027	BLR027E	WB, IP, IHC, ICC, IHC-IF
CD86	A700-030	BLR030F	WB, IP, IHC, ICC
IDO1	A700-031	BLR031F	WB, IHC, ICC
TIM3	A700-033	BLR033F	WB, IHC, ICC
VISTA	A700-035	BLR035F	WB, IP, IHC, ICC, IHC-IF
B7-H4	A700-043	BLR043F	WB, IP, IHC, ICC, IHC-IF
OX40/CD134	A700-042	BLR042F	WB, IP, IHC, ICC, IHC-IF
CD44	A700-038	BLR038F	WB, IP, IHC
Ki-67	A700-021	BLR021E	WB, IHC, ICC, ICC-IF
FOXP3	A700-034	BLR034F	WB, IP, IHC, ICC
CD30	A700-055	BLR055F	WB, IP, IHC, ICC
TIGIT	A700-047	BLR047F	WB, IHC, IHC-IF
CD73	A700-054	BLR054F	WB, IHC, ICC
Cytokeratin	A500-019A	AE1/AE3	IHC, ICC-IF

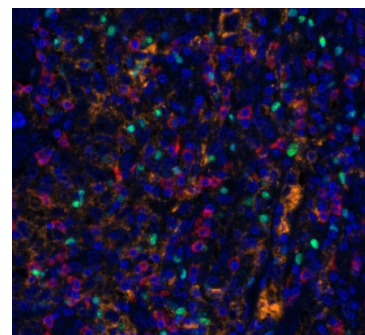
See our protocol for recommended HRP-conjugated antibodies.
Antibodies listed in green are PathPlex™ Core Antibodies.
To view Bethyl's complete cancer portfolio, visit bethyl.com/immuno-oncology.
For Research Use Only



Detection of human CD3 (green), CD20 (magenta), CD68 (yellow), and Cytokeratin (red) in FFPE tonsil by IHC-IF. Antibodies: CD3 (A700-016), CD20 (A500-017A), CD68 (A500-018A), Cytokeratin (A500-019A). Substrate: Opal™ reagent. Counterstain: DAPI (blue).



Detection of human Ki-67 in FFPE ovarian carcinoma by IHC. Antibody: Rabbit anti-Ki-67 recombinant monoclonal [BLR021E] (A700-021). Secondary: HRP-conjugated goat anti-rabbit IgG (A120-501P). Substrate: DAB.



Detection of human CD8 (red), FoxP3 (green), and PD-L1 (orange) in FFPE breast carcinoma by IHC-IF. Antibodies: CD8 (A700-044), FoxP3 (A700-034), and PD-L1 (A700-020). Substrate: Opal™ reagent. Counterstain: DAPI (blue).



Email: sales@bioscience.co.uk

Call: 01223 316 855

www.bioscience.co.uk



BETHYL
LABORATORIES, INC

Bringing Your Research Into Focus.

Montgomery, Texas | 800.338.9579 | bethyl.com