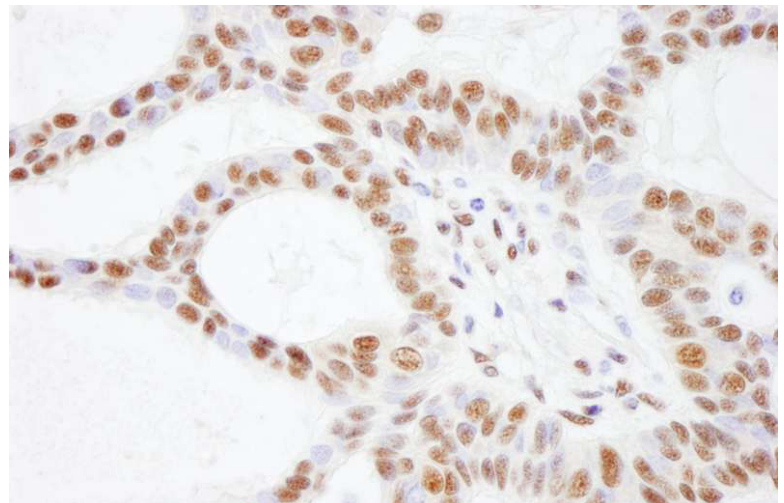
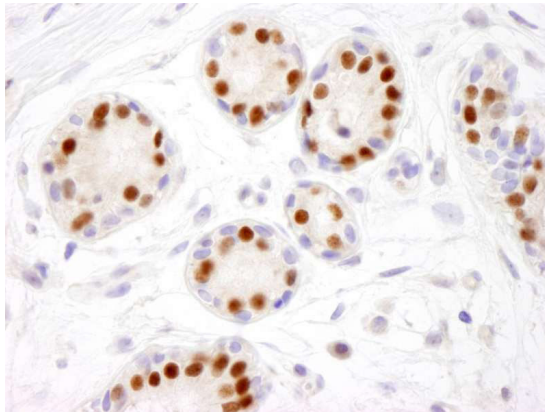




Antibodies for Chromatin Remodeling Research

Over 495 Antibodies Targeting More Than 200 Proteins Involved in Chromatin Remodeling



Upper: Detection of human SMAR1/BANP in breast tumor by immunohistochemistry. Antibody: Rabbit anti-SMAR1/BANP IHC Antibody, Cat# IHC-00140.

Lower left: Detection of human Estrogen Receptor alpha in breast tissue by immunohistochemistry. Antibody: Rabbit anti-Estrogen Receptor Alpha IHC Antibody, Cat# IHC-00006. Lower right: Detection of human SMARCC2/BAF170 in basal cell carcinoma by immunohistochemistry. Antibody: Rabbit anti-SMARCC2/BAF170 Antibody, Cat# A301-039A.

Chromatin Remodeling
Really Good Antibodies

bethyl.com

BETHYL
LABORATORIES, INC

Chromatin Remodeling Antibodies

Bethyl Laboratories, Inc. is dedicated to improving lives by supporting scientific discovery through its qualified antibody products and custom antibody services. Since its founding in 1972, Bethyl has manufactured all of its antibodies on-site to exacting standards with validation to a range of applications.

Below is a sampling of select antibodies targeting proteins involved in chromatin remodeling. For a complete product listing, please visit: bethyl.com/category/pca_research_chromatin.

Target	Reactivities	Applications	# of Abs	AbVantage™ Pack
ACTB/Cytoskeletal Actin	Hu, Ms	WB, IF, IHC	2	Yes
ARID1A/BAF250	Hu	WB	2	Yes
BRD2	Hu, Ms	WB, IP, ICC, IF, IHC, PLA	5	Yes
BRD3	Hu	WB, IP, IF, IHC	3	Yes
CARM1	Hu, Ms	WB, IP, IF, IHC	3	Yes
CHD8	Hu, Ms	WB, IP, IF, IHC	3	Yes
CTCF	Hu, Ms	WB, IP, IF, IHC	4	Yes
DNMT3A NEW	Hu, Ms	WB, IF, IHC	1	
DPY30 NEW	Hu	IP	1	
ESR1/Estrogen Receptor Alpha*	Hu	WB, IP, IF, IHC, PLA	5	Yes
EZH2*	Hu, Ms	WB, IP, IF, IHC	3	Yes
HDAC1	Hu, Ms	WB, IP, IF, IHC, PLA	3	Yes
HDAC6	Hu, Ms, Rt	WB, IP, ChIP-Seq	2	Yes
KDM4A/JMJD2A	Hu, Ms	WB, IP, IF, IHC, ChIP-Seq	3	Yes
KDM4B/JMJD2B	Hu, Ms	WB, IP	2	Yes
KDM5A/JARID1A/RBP2	Hu, Ms	WB, IP, IF, IHC, PLA	2	
MCM2*	Hu, Ms, Bv, Xe	WB, IP, IF, IHC, F, PLA	11	Yes
MEN1/Menin	Hu, Ms	WB, IP, ICC, IF, IHC, ChIP-PCR, PLA	7	Yes
MYC/c-myc	Tag	WB, IP, ICC, IF, ELISA, PLA	17	
NF1	Hu, Ms	WB, IP	1	
PBRM1/PB1/BAF180	Hu, Ms	WB, IP	2	Yes
POLR2A/RNA Polymerase II* NEW	Hu, Ms	WB, IP, IF, IHC, ChIP-PCR, PLA	9	Yes
SETD1A/hSET1	Hu, Ms	WB, IP, IF, IHC, ChIP-chip, ChIP-PCR	4	Yes
SMARCA4/BRG1	Hu, Ms	WB, IP, IF, IHC, PLA	4	
SMC1A/SMC1*	Hu, Ms, Xe	WB, IP, ICC, IF, IHC, PLA	8	Yes
TDG NEW	Hu	WB, IP, IF, IHC	1	
TOP1	Hu, Ms	WB, IP	2	Yes
TRIM28/KAP-1*	Hu, Ms	WB, IP, ICC, IF, IHC, PLA	9	Yes
UPF1/RENT1	Hu, Ms	WB, IP, PLA	4	Yes

All antibodies are antigen affinity purified.
*Phospho-specific available

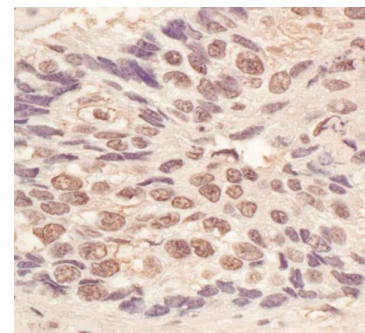
Select Journal Citations

Target	Title	Journal
BRD3	Genome-wide localization of small molecules	Nat Biotechnol. 2013 Dec 15.
WDR5	An epigenetic switch induced by Shh signalling regulates gene activation during development and medulloblastoma growth.	Nat Commun. 2014 Nov 5;5:5425.

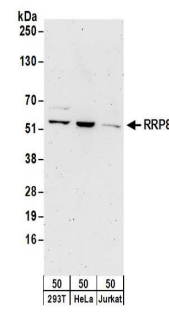


We Make Every Antibody We Sell.

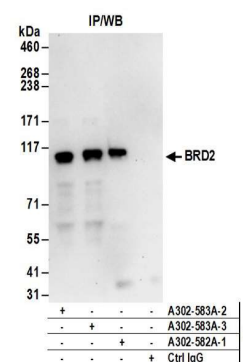
Montgomery, Texas | 800.338.9579 | bethyl.com



Detection of human L3MBTL3 in lung carcinoma by immunohistochemistry. Antibody: Rabbit anti-L3MBTL3 Antibody, Cat# A302-854A.



Detection of human RRP8 by western blot of 293T, HeLa, and Jurkat cell lysates. Antibody: Rabbit anti-RRP8 Antibody, Cat# A304-201A.



Detection of human BRD2 by western blot of immunoprecipitates from HeLa cell lysate. Antibodies: Rabbit anti-BRD2 Antibody, Cat# A302-583A, used immunoprecipitation and western blotting. BRD2 was also immunoprecipitated by a previous lot of this antibody.