

Antimicrobial peptides



Hycult[®]Biotech

bringing innate immunity to the **next level**

Antimicrobial peptides

Hycult Biotech is a leading world-class manufacturer of research reagents in the field of innate immunity. We are a specialized partner in the development and manufacturing of assays, antibodies, proteins and peptides. With the focus on innate immunity, we pay special attention to products relating to antimicrobial peptides, complement, acute phase proteins, TLR, LPS and microbial toxins.

Antimicrobial peptides and proteins are important means of innate host defense in eukaryotes. They have a broad ability to kill microbes. Beside their role as endogenous antibiotics, antimicrobial peptides are involved in cytokine release, chemotaxis, angiogenesis, wound repair and regulation of the adaptive immune system. We offer a broad range in the field of antimicrobial peptides, from antibodies and proteins to specific, sensitive and robust ELISA kits.

Validated ELISA kit sample types:

| | |
|-------------------------------------|------------------------------|
| BF: Bronchoalveolar fluid | BM: Breast milk |
| CS: Cell culture supernatant | F: Feces |
| P: Plasma | S: Serum |
| SP: Sputum | TH: Tissue homogenate |
| U: Urine | |

| ELISA kits | | | |
|---------------------------|---------|----------------|--------|
| Product name | Species | Sample types | Cat. # |
| Azurocidin | Human | P S SP | HK352 |
| Calprotectin | Human | F P S U | HK379 |
| Calprotectin, Rapid Fecal | Human | F | HK382 |
| Elafin | Human | CS P S | HK318 |
| HNP1-3 | Human | CS P | HK317 |
| Lactoferrin | Human | BM CS F P U | HK329 |
| LBP | Human | CS P S | HK315 |
| LBP | Mouse | CS P S | HK205 |
| LBP | Various | CS P S | HK503 |
| LL-37 | Human | CS P | HK321 |
| MPO | Human | CS P SP | HK324 |
| MPO | Mouse | CS P TH | HK210 |
| MPO | Rat | CS P TH | HK105 |
| RNase 7 | Human | BF CS P S U | HK371 |
| S100A9/Calprotectin | Mouse | P S | HK214 |
| SLPI | Human | BF CS P S SP U | HK316 |

Can't find the sample type you want for an ELISA kit?

Ask the support team to assist you with your research needs on support@hycultbiotech.com!

Looking for other related products?

We have more than ten folders that highlight different segments of our portfolio, such as granulocyte & lymphocyte proteins, LPS and TLR!

How many tests would you like?

Almost all our ELISA kits are available in both a 1-plate and a 2-plate format!

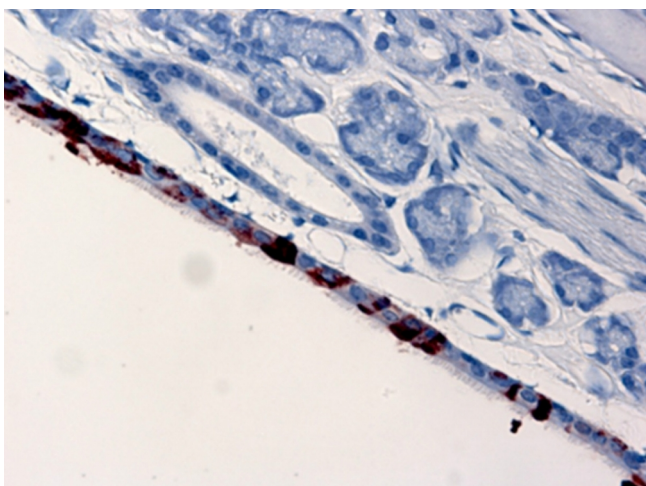
Validated antibody applications:

| | |
|-------------------------------|--------------------------------|
| F: Frozen sections | FC: Flow cytometry |
| FS: Functional studies | IA: Immunoassay |
| IF: Immunofluorescence | IP: Immunoprecipitation |
| P: Paraffin sections | W: Western blot |

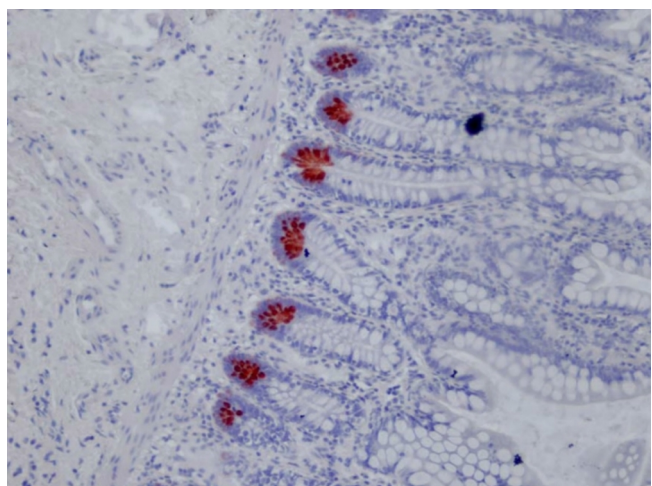
Need a custom formulation?

Ask us and we will advise you on the possibilities!

| Antibodies | | | | |
|--------------|-----------|---------|----------------------|--------|
| Product name | Clone | Species | Applications | Cat. # |
| Azurocidin | z6718 | Human | F IF W | HM2312 |
| Azurocidin | z6721 | Human | IA W | HM2310 |
| Azurocidin | z6733 | Human | IA | HM2311 |
| Calprotectin | 27E10 | Human | F FC IA IF IP P W | HM2156 |
| Defensin 5 | 8C8 | Human | F IA W | HM2228 |
| Dermcidin | G-81 | Human | IA P W | HM2040 |
| Elafin | pAb | Human | IA P W | HP9025 |
| Elafin | TRAB2F | Human | IA P W | HM2063 |
| Elafin | TRAB2O | Human | IA P W | HM2062 |
| HNP1-3 | D21 | Human | F FC FS IA IF IP P W | HM2058 |
| Lactoferrin | 5F12.1.2 | Bovine | IA W | HM4012 |
| Lactoferrin | a-bC-lobe | Bovine | IA P W | HM4013 |
| Lactoferrin | 265-1K1 | Human | F IA W | HM2173 |
| Lactoferrin | 1A10 | Mouse | FC IA | HM1132 |
| Lactoferrin | 1E4 | Mouse | IA | HM1133 |
| LBP | 1C7 | Human | FS IA IP | HM2044 |
| LBP | 6G3 | Human | FS IA IP | HM2043 |
| LBP | pAb | Human | IA IP W | HP9023 |
| LBP | M330-19 | Mouse | FS IA W | HM1026 |
| LBP | RR433-8 | Mouse | FS IA W | HM1027 |
| LL-37/CAP-18 | 1-1C12 | Human | IA IF P W | HM2071 |
| LL-37/CAP-18 | 3D11 | Human | FS IF P W | HM2070 |
| LPLUNC1 | pAb | Mouse | IF P W | HP8044 |
| MPO | 266-6K1 | Human | IA W | HM2164 |



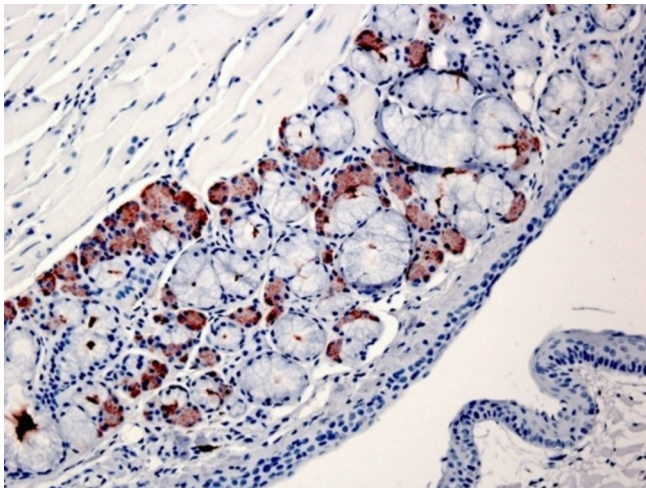
SPLUNC1 in mouse nasal epithelium. Staining of paraffin section with polyclonal antibody (Cat. # HP8043)



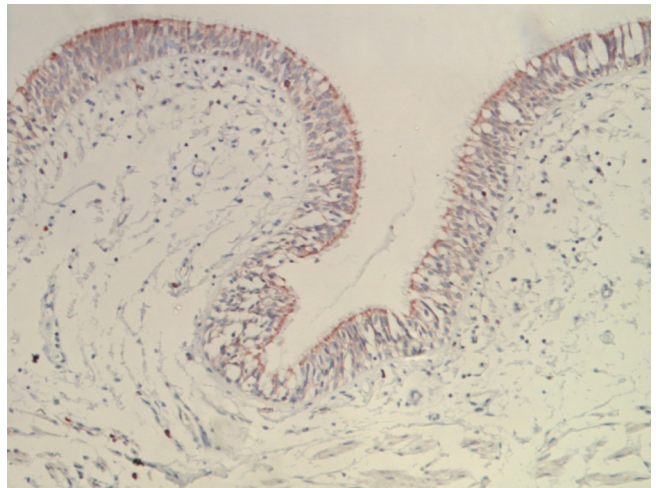
Defensin 5 in human ileum tissue. Staining of paraffin section with clone 8C8 (Cat. # HM2228)

Antibodies

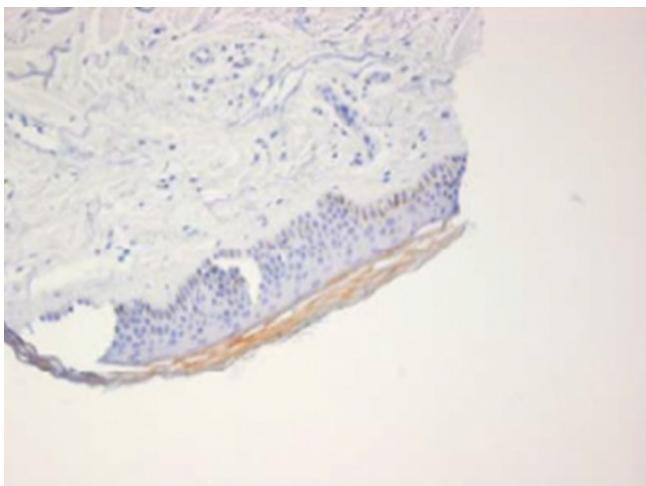
| Product name | Clone | Species | Applications | Cat. # |
|-----------------------|----------|---------|----------------|--------|
| MPO | B7 | Human | F FC IA W | HM2288 |
| MPO | pAb | Human | F IA P | HP9048 |
| MPO | 8F4 | Mouse | F FC IA IF | HM1051 |
| MPO | B7 | Mouse | F FC IA W | HM1135 |
| MPO | 2D4 | Rat | FC IA | HM3030 |
| MPO | B7 | Rat | F FC IA W | HM3039 |
| MRP-8 | 7C12/4 | Human | FC IA W | HM2175 |
| MRP-14 | 1H9 | Human | FC IA W | HM2176 |
| Neutrophil defensin 5 | R3 | Rabbit | F FC IA P W | HM4008 |
| RNase 7 | 3C2 | Human | IA P W | HM2316 |
| RNase 7 | 4F9 | Human | F IA P W | HM2317 |
| S100A7 | 9F3 | Human | FS IA IF P W | HM2328 |
| S100A9 | MU14-2A5 | Mouse | F FS IA IF P W | HM1102 |
| SLPI | 31 | Human | F IA IP P W | HM2037 |
| SLPI | pAb | Human | IA IP W | HP9024 |
| SPLUNC1 | 5F5B12 | Human | F IA IF W | HM2314 |
| SPLUNC1 | 5F5G1 | Human | F IA IF W | HM2315 |
| SPLUNC1 | pAb | Mouse | P W | HP8043 |



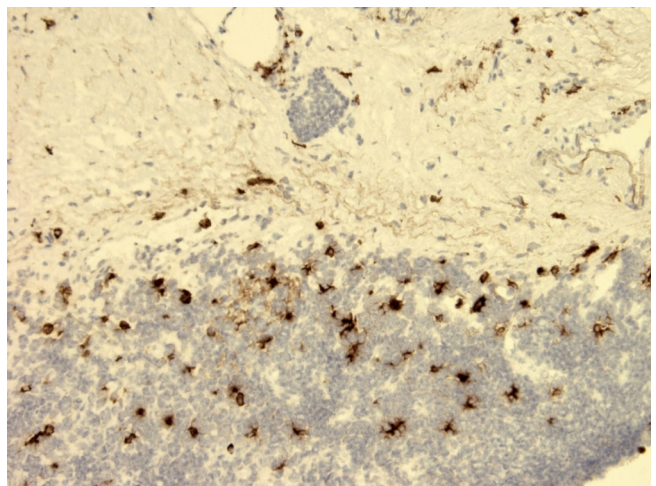
LPLUNC1 in mouse soft palate tissue. Staining of paraffin section with polyclonal antibody (Cat. # HP8044)



LL-37 in human kidney. Staining of paraffin section with clone 3D11 (Cat. # HM2070)



RNase 7 in human skin tissue. Staining of paraffin section with clone 4F9 (Cat. # HM2317)



SLPI in human tonsil. Staining of frozen section with clone 31 (Cat. #HM2037)

| Proteins and peptides | | | |
|---------------------------|---------|------------|--------|
| Product name | Species | Quantity | Cat. # |
| Alpha-defensin 6, Peptide | Human | 50 µg | HC2137 |
| Calprotectin, Recombinant | Human | 50 µg | HC2120 |
| Cathepsin G, Peptide | Human | 50 µg | HC2138 |
| CRAMP, Peptide | Mouse | 50 µg | HC1106 |
| Elafin, Recombinant | Human | 50 µg | HC4011 |
| HNP-1, Peptide | Human | 50 µg | HC2134 |
| HNP-2, Peptide | Human | 50 µg | HC2135 |
| HNP-3, Peptide | Human | 50 µg | HC2136 |
| HNP1-3, Natural | Human | 100 µg | HC4014 |
| LBP, Natural | Human | 10 µg | HC4010 |
| LBP, Peptide | Human | 100 µg | HC4030 |
| LL-37, Peptide | Human | 50 µg | HC4013 |
| Polymyxin B | Human | 10E5 units | HC4020 |

Want a conjugated antibody?

Visit our website to see all available formats or contact us!

Product in bulk quantity?

Contact us for a customized quotation!

Want to try different antibodies?

Use the sampler pack (Cat. # HM8999) to find the best antibody for your specific setup!



What we stand for

- Original manufacturer
- > 20 years experience
- Support within one working day
- Innate immunity focus
- Reliable and robust
- Scientific drive

Hycult Biotech, bringing innate immunity to the **next level**



www.hycultbiotech.com

Hycult Biotech
is distributed by:

Hycult Biotech
Frontstraat 2a
5405 PB Uden
The Netherlands
T +31 (0)413 251335
F +31 (0)413 248353
E info@hycultbiotech.com

Hycult Biotech Inc.
600 West Germantown Pike
Suite 110, Plymouth Meeting
PA 19462, USA
T +1 855 2492858
F +1 484 3683558
E orders-us@hycultbiotech.com

Even though the information provided is verified and believed to be accurate, there is always a chance that it is imprecise or may be outdated. Please make sure to visit our website for the most recent product information or contact us in case you have any questions or comments.